



RELIABILITY IN  
OBSTRUCTION  
LIGHTING

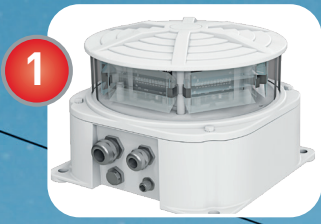


# Obstruction Lighting

for  
**POWERLINES**

[www.obsta.com](http://www.obsta.com)

# DAY & NIGHT MARKING FOR TOWERS HIGHER THAN 45M



## OFD Medium Intensity White & Red at top level

*White during daytime and  
red during night*

- Type A & B compliant to ICAO, CAA
- Hard Glass and Aluminium. IP66 verified
- Easy installation with only captive parts
- Surge protection included
- Optional GPS interface for synchronisation
- 30cm diameter x 30cm height - Weight: 11 kg

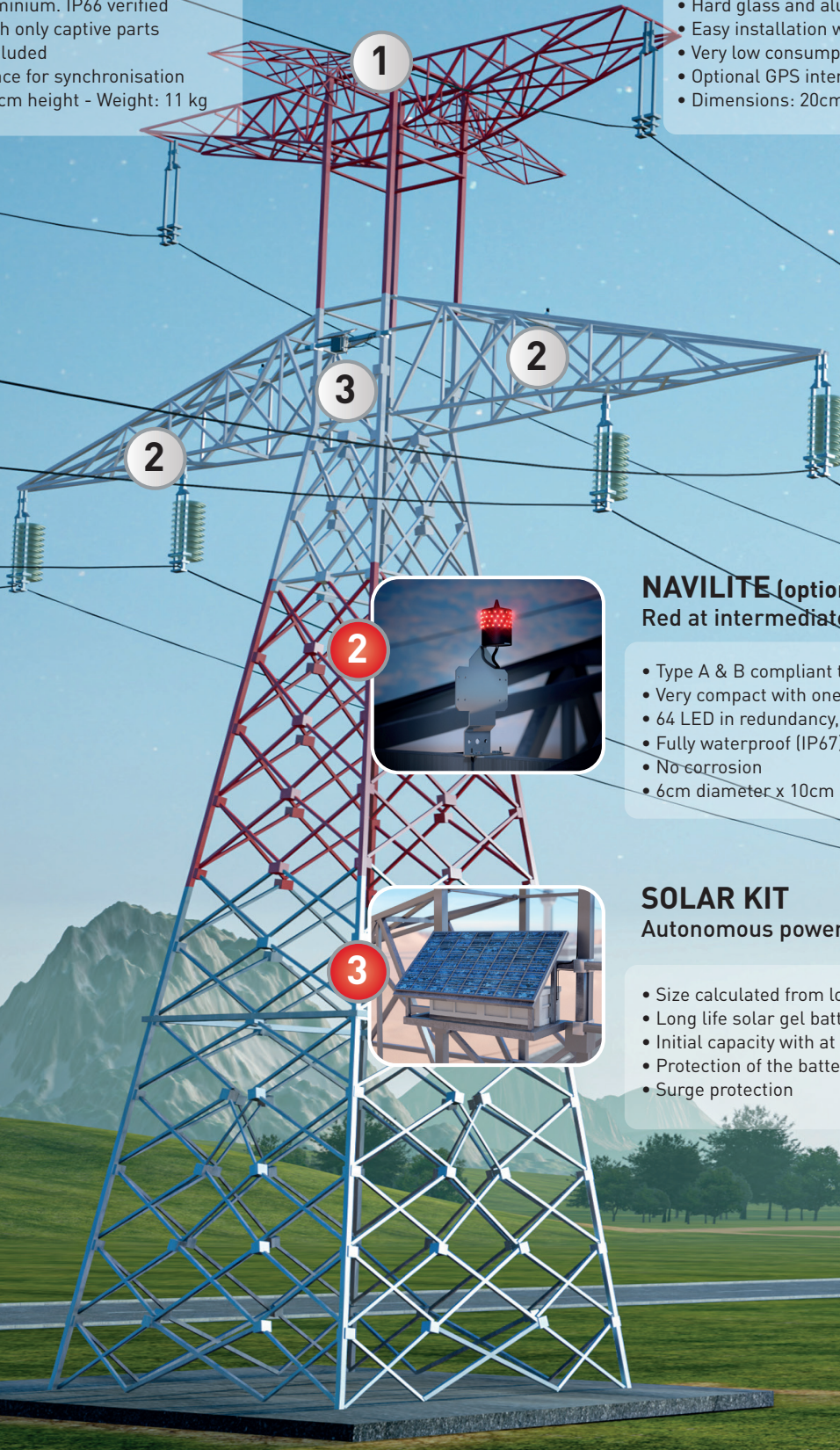
or



## OFC Medium Intensity Red Only at top level

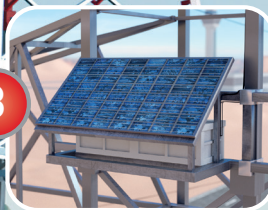
- Type B & C compliant to ICAO, CAA and FAA L-864
- Hard glass and aluminium. IP66 verified
- Easy installation with only captive parts
- Very low consumption
- Optional GPS interface for synchronisation
- Dimensions: 20cmx20cmx20cm - Weight: 5 kg

> 45M



## NAVILITE (optional) Low intensity Red at intermediate level

- Type A & B compliant to ICAO, CAA
- Very compact with one mounting screw
- 64 LED in redundancy, resin molded
- Fully waterproof (IP67)
- No corrosion
- 6cm diameter x 10cm height - Weight: 370g



## SOLAR KIT

### Autonomous power supply

- Size calculated from localization and options
- Long life solar gel batteries
- Initial capacity with at least 6 days of autonomy
- Protection of the battery against deep discharges
- Surge protection

**HVLITE - CONDUCTOR WARNING LIGHT LED & Induction**  
Type, Night Time every 70m nearby airport, 105m otherwise

**BALISOR - CONDUCTOR WARNING LIGHT**  
Neon & Capacitive Type



or

- Versions from 11 kV to 550 kV
- ICAO compliant Low Intensity Red steady-burning light
- Only 2 halves of anodized aluminium
- Most effective form factor against vibrations and wind
- 4 captive screws for assembly in few minutes
- Inductive power supply requiring 10 A

- Versions from 60 kV to 550 kV
- ICAO compliant Low Intensity Red steady-burning light
- Hard glass cold neon discharge tube
- OBSTA patented and manufactured from 1938
- No maintenance through decades
- Light intensity independent from current



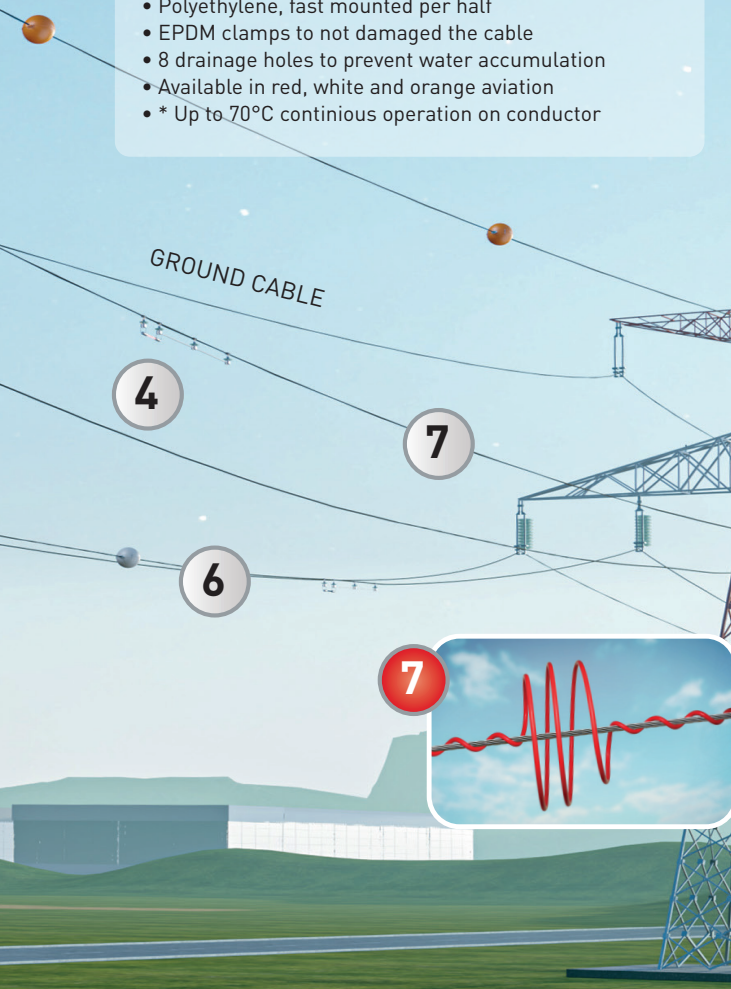
or

**PLASTIC WARNING SPHERE 600MM**  
Every 30M on OPGW or conductor up to 132kV\*

**ALUMINIUM WARNING SPHERES 600MM**  
Every 30M on power cables up to 400 kV

- ICAO and CAA compliant
- Polyethylene, fast mounted per half
- EPDM clamps to not damaged the cable
- 8 drainage holes to prevent water accumulation
- Available in red, white and orange aviation
- \* Up to 70°C continuous operation on conductor

- ICAO Compliant
- Fast mounting per half with latches
- Only 1 person required for installation, only captive parts
- 8 drainage holes to prevent water accumulation
- Long durability in all climate conditions
- Available in white and red aviation



**BIRD-FLIGHT Diverter**

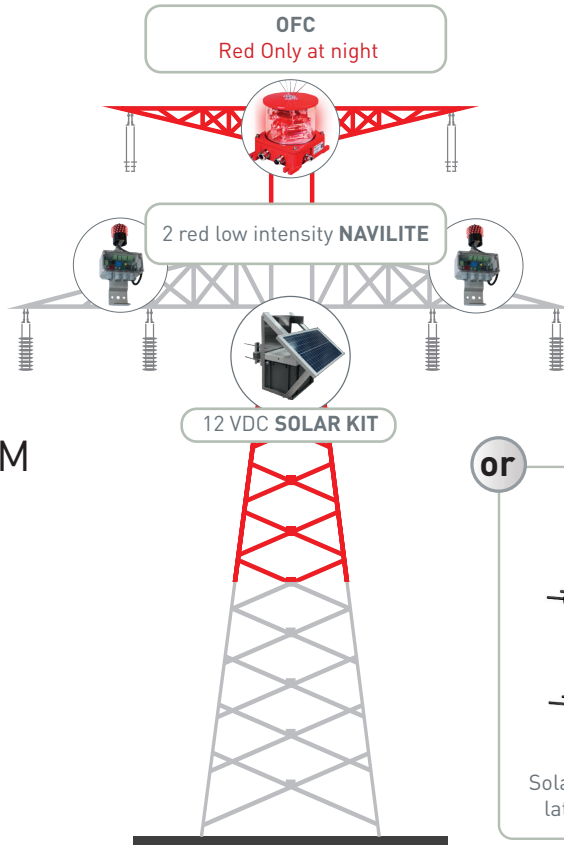
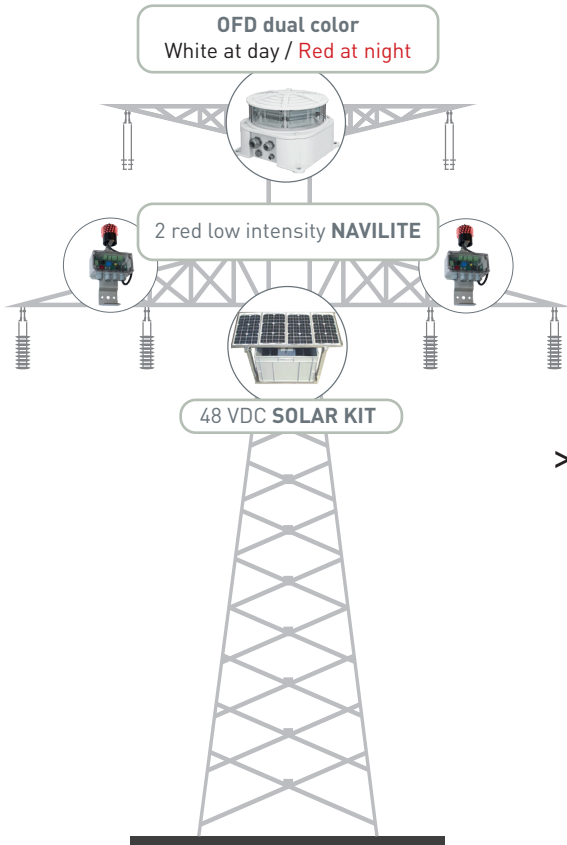
- Made with high impact PVC with UV protection
- Full unit or half available
- Low weight
- Quick and easy manual installation
- Positive grip on the conductor
- Available in dark gray, yellow or red.

## SUMMARY OF ALL CONFIGURATIONS

According to ICAO Chapter 6 Annex 14

**TOWER WITHOUT PAINT MARKING\***  
White at day / Red at night required

**TOWER WITH PAINT MARKING**  
Red at night only required

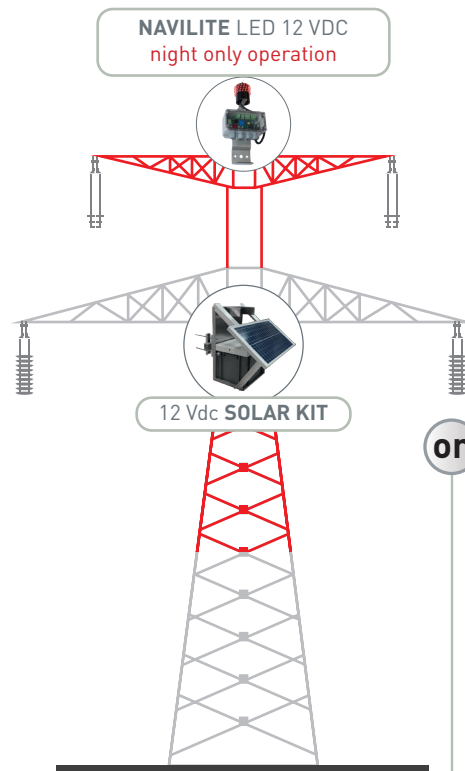
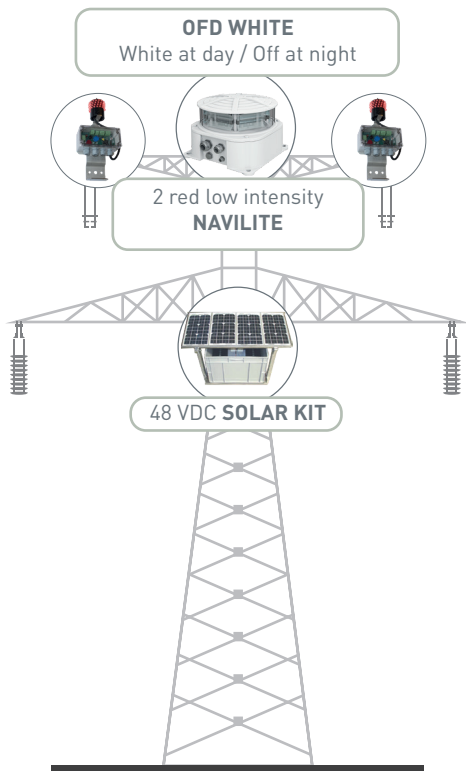


> 45M

or

**COMPACT KIT**

Solar kit size depends on latitude and longitude



< 45M

or

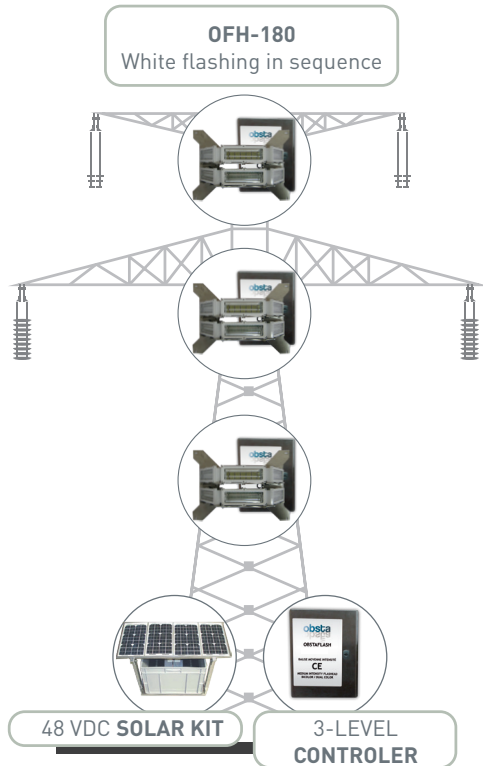
**COMPACT KIT**

Solar kit size depends on latitude and longitude

\* White flashing lights during daytime eliminates the need of white and red painted stripes

## ALTERNATIVES WITH 3 LEVELS FOR TOWERS ONLY

ICAO Annex 14. «When it has been determined that an overhead line needs to be marked but it is not practicable to install markers on the wire, then high-intensity obstacle lights Type B, should be provided on their supporting towers.»



or

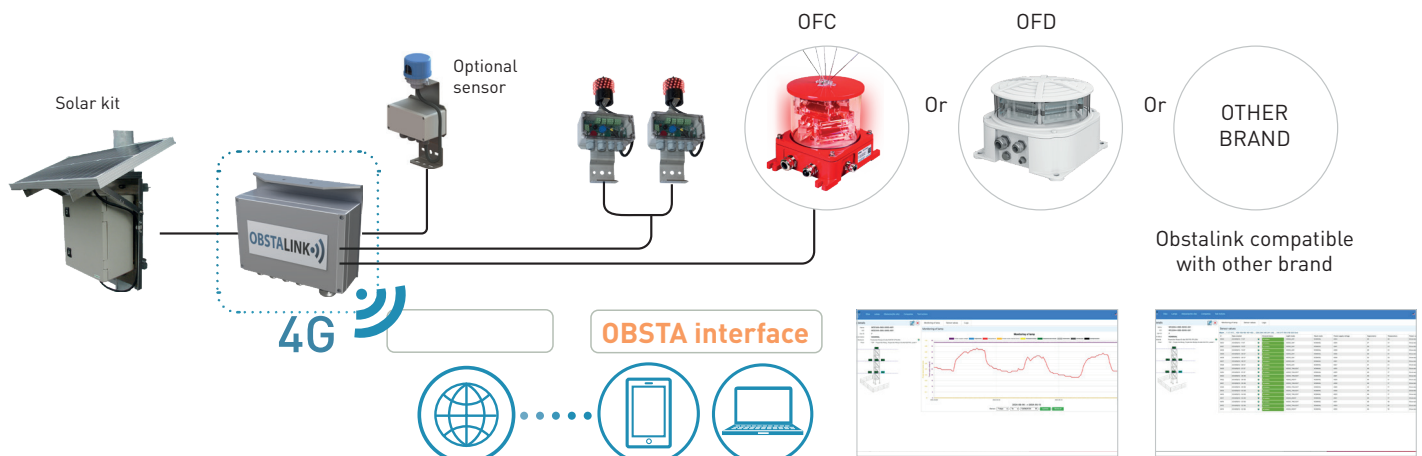


They shall be located at three levels:

- at the top of the tower
- at the lowest level of the catenary of the wires or cables
- at approximately midway between these 2 levels

They should be commanded to flash sequentially; first the middle, second the top and last, the bottom light.

## REMOTE CONTROL



This IOT gateway is designed to monitor and control aviation warning lights remotely on a dedicated web server. This IOT gateway is compatible with most of aviation warning lights on the market

- Periodic control of obstruction lighting system typically every 30 minutes
- Control of the power consumption up to 3 obstruction lights (or group of obstruction lights)
- Control of the dry alarm contacts (normally close or normally open) if available from the lamps
- Control of the power source and ON/OFF capability
- Control of day/twilight/night status from photocell if available
- Super capacitor in case of power failure allowing to send an ultimate alarm message
- Alarm threshold settings on the server
- EN 18031-1 and EU Cyber Resilience Act (CRA) compliant

# Why Choose OBSTA?

- ☀ Expertise for decades
- ☀ Certified & Reliable Products
- ☀ Comprehensive Solutions
- ☀ Long-Term Partnership



**1**

**FAA ICAO** 

### CONSULTING & REGULATORY GUIDANCE

ICAO and FAA regulations can be complex. OBSTA's experts guide you from day one by analyzing your structure (wind turbines, pylons, cranes, chimneys, high-voltage lines, buildings), recommending the appropriate obstruction light(s) (low, medium, or high), and ensuring full compliance with international standards. We help you move forward with confidence.


**2**



### PRODUCT SELECTION & SUPPLY

OBSTA offers a comprehensive range of obstruction lights designed for every application and environment. Whether you need a solar-powered solution, infrared night-vision compatible lighting, or a complete control and monitoring system, we have the right product.

**3**



### INSTALLATION SUPPORT

Our team can provide full technical support during the installation phase — remote assistance, detailed documentation, wiring diagrams, and on-site commissioning when needed. We ensure your lighting system is up and running correctly,

**4**



### MAINTENANCE & LONG-TERM SUPPORT

Aviation safety never stops. OBSTA supports you throughout the lifetime of your installation with spare parts, upgrades, and technical assistance. As regulations evolve, we help you stay compliant and keep your infrastructure performing at its best.

## Some references on all continents and conditions



**France**  
**Head office**  
**Sales department**  
 Paris  
 Tel. +33 -1 41 23 50 10

**Factory**  
 Reims

**Germany**  
 Bochum  
 Tel. +49 2327 6057 0

**USA**  
 Miramar  
 Tel. 954 430 63 10

**China**  
 Shanghai  
 Tel. +86 21 58 12 25 25

**India**  
 New Delhi  
 Tel. + 91 11 4001 81 31

**Thailand**  
 Bangkok  
 Tel. + 66 (0) 2 104 9214

**UAE**  
 Dubai  
 e-mail: info@obsta.ae

**Colombia**  
 Bogota  
 e-mail: export@citel.fr

 [info@obsta.com](mailto:info@obsta.com)

 [www.obsta.com](http://www.obsta.com)

Follow us  

A CITEL company



www.citel.fr