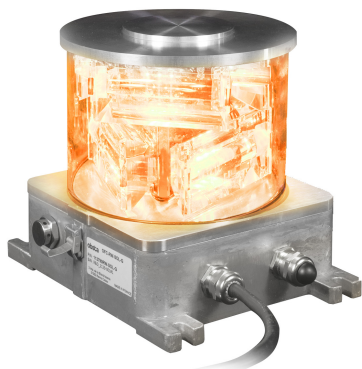


Bird Diverter with amber light. Additional system to be used along with Obstruction light.

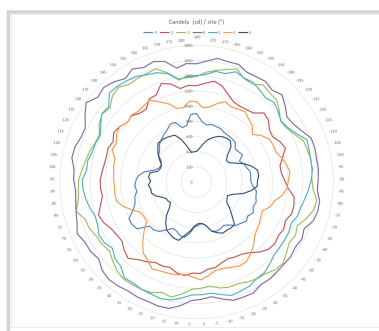


The amber light cause visual disturbance, encouraging birds to avoid the area.

Integrated beacon including

- 6 Obsta optical units in hard glass casing with aluminum base
- Power supply integrated into beacon
- Amber LED programmable in fixed or flashing mode
- 2 independent redundant circuits
- Surge protection included
- Alarm dry contact in the event of lamp or power supply failure
- Easy installation with captive elements during installation

Option **built-in photocell and GPS (flash sync)**



Electrical Characteristics	
Main voltage	48VDC (-10%; +15%)
Average wattage	10W in flashing mode. 30W continuous light
Mechanical Characteristics	
IP degree	IP66
Wiring	Entry of cable by one cable gland and connection by terminals
Operating temperature	-40/+55°C
Weight	6kg
Size of the light	220mm x 190mm x 190mm
Wire cross section	from 1 to 2,5 mm ²
Attachment	4 mounting holes dia.9mm, 200mm x 140mm
Photometric Characteristics	
Effective light output day time at 0° on site	2000cd @ 40 flashes per minute (amber)
Effective light output night mode at 0° on site	2000cd @ 20 flashes per minute (amber)
Color day/twilight time	Amber
Color night time	Amber
Vertical beam spread	>3°
Horizontal beam spread	360°
Flash per minute	Fixed, 20, 30, 40 or 60 flashes per minute