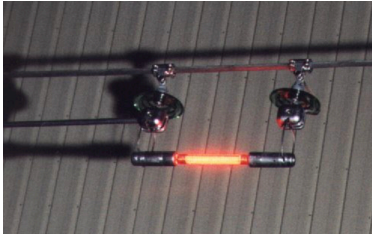
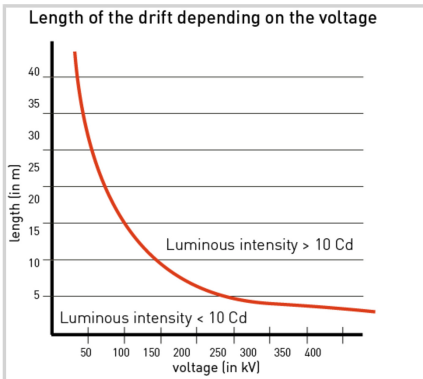


### *Obstruction lighting system for high voltage lines, red fixed low intensity*



- suitable for high voltage up to 550KV with fixing accessories adapted to the diameter of the cable
- rigid capacitive element in aluminium easy to install
- optimized distance of 300mm between the power cable and the capacitive element providing optimal power to the light
- clamps adapted to the diameter of the cable
- long life BALISOR lamp B49 P/N100618 with interference suppression included
- red fixed color with light intensity higher than 10 candelas, the BALISOR® fall into the ICAO low intensity category.
- a very long lifetime of the balisor lamp, essential to continuous operation of high voltage lines
- robust, operates as soon as power line is turned on, no current in the conductor is required

The power supply by capacitive elements ensures a constant light intensity whatever is the value of the electric current crossing the line



<b>Electrical Characteristics</b>	
Power source	Autonomous by capacitive effect
<b>Mechanical Characteristics</b>	
Attachment	Aluminium clamps matching with the diameter of the cable
<b>Photometric Characteristics</b>	
Luminous intensity	> 10 Cd
<b>Standards</b>	
Standards compliance	ICAO Aerodrome Design Manual Part 4 chapter 14