

## Dual color medium intensity FAA L-865/L-864 ETL certified

### Flashhead

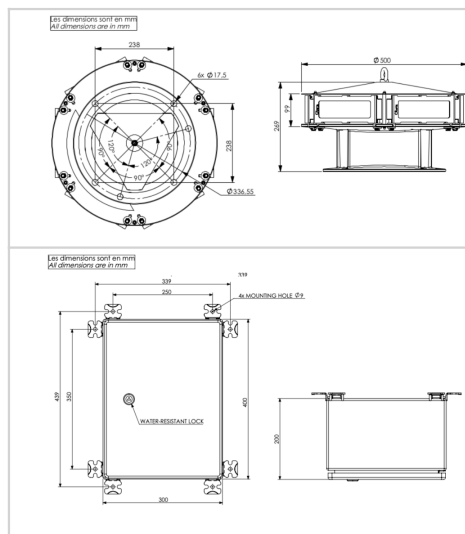
- 6 led projectors in aluminium and glass
- 2 white led circuits and a red with infrared circuit inside each projector
- NVG visible
- Simple installation with no losing parts when opening the flash-head
- Normally open or normally close relay in case of lamp default or power supply
- Communication capabilities (controller, Modbus TCP)
- Test button for day and night
- Luminous indicators for quick diagnostic
- dc surge protection with indicator showing when it has failed included
- GPS controlled or in back-up activated in case of failure or absence of an external controller or/and photocell



EP 1966535B1 & US 7816843

### Power supply

- Patents:
- 'Weather tight' stainless steel 316L power cabinet enclosure
  - Test button with 3 positions: remote (photocell), day and night mode
  - Alarm in compliance with FAA Engineering Brief 98
  - Multi-layer of surge protections
  - External photocell
  - Master/slave capability in case of multiple lights synchronisation
  - Photocell P/N 100757-KIT and side lights L-810(L)(F) NAVILITE-IR-FAA-120-240V P/N 113969IR-F for mid level to be ordered separately



Electrical Characteristics	
Main voltage	110VAC to 240VAC +/-10% 50/60Hz
Average wattage	55W (day time), 8W (night mode)
Mechanical Characteristics	
IP degree	IP66 per projector
Wiring	Entry of cable by glands nickel plated brass and connection by terminals
Operating temperature	-40/+55°C
Weight	18kg for flashhead, 10kg for power cabinet
Size of the light	333mm (height) x 500mm (diameter)
Size of the power supply	400mm (height) x 300mm (width) x 200mm (dept)
Wire cross section	from 1 to 4 mm²
Attachment	6 mounting holes dia.16mm, dia.337mm circle (FAA standard)
Photometric Characteristics	
IR intensity and wavelength	> 600mW/sr @ 800-900nm
Effective light output day time at 0° on site	20 000cd (white)
Effective light output twilight mode at 0° on site	20 000cd (white)
Effective light output night mode at 0° on site	2000cd (red) with IR
Color day/twilight time	white
Color night time	Red
Vertical beam spread	>3°
Horizontal beam spread	360°
Flash per minute	40/30 as per FAA
Standards	
Standards compliance	ICAO annex 14 chapter 6, FAA (AC 150/5345-43J), UK MOD, Transport Canada
Certification	FAA (AC 150/5345-43J), ETL certified, DGAC(Fr)